

# Whanake Māori Industry Event

Thursday 20, June 2024 | Waikato

## Industry Panel

### Les Roa



**Iwi:** Ngaati Maniapoto, Ngaati Apakura

**Company:** Longveld Ltd - Director

**Contact details:** l.roa@longveld.com

**Hopes for Māori Workforce:** "That this contributes to changing the intergenerational poverty issues facing Māori and their whānau. Lifting the incomes to Māori families exponentially would address a myriad of issues e.g. health and education."

### Maia Stockman



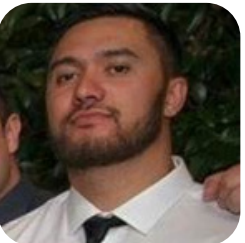
**Iwi:** Maniapoto, Tamaterā, Maru, Raukawa ki te Tonga.

**Company:** CM Contractors Limited - Managing Director

**Contact details:** 021-1729-716 | cmcontractors@hotmail.com

**Hopes for Māori Workforce:** "To create an environment that fosters individual leadership skills by removing barriers to success and offering opportunities that leverage our natural ability to learn through practical application and mentorship."

### Tahiwi Magner



**Iwi:** Ngāti Maniapoto, Ngāti Tuwharetoa

**Company:** Tira - Project Manager

**Contact details:** 027-899-4593 | [Linkedin](#)

**Hopes for Māori Workforce:** "My hope is for more and more Māori to build careers in engineering and construction. These fields have opened many doors for me, taking me to amazing places across the US, Europe, and Australia. I want others to have those same opportunities. The skills they gain can not only benefit them but also be brought back to strengthen their wider whānau, creating additional pathways for success."

### Ariane Ormsby



**Iwi:** French, Balkan

**Company:** Ormsby Civil Construction - Managing Director

**Contact details:** [Linkedin](#)

**Hopes for Māori Workforce:** "My hope for Māori entering the industry, is that they find a supportive and inclusive environment that fosters their growth and development. I envision a future where Māori engineers are well-represented and lead innovative projects that respect and integrate Māori knowledge and perspectives."

### Eileen Bowden



**Iwi:** Ngāti Tūwharetoa, Raukawa, Ngai Te Ranginui

**Company:** Miraka Limited - Kaihautū

**Contact details:** 021 897 435 | eileen.bowden@miraka.co.nz

**Hopes for Māori Workforce:** "Developing future Maori leaders for the world of dairy and kai."

## Government Panel

### Margaret Paiti



**Iwi:** Cook Island and Scottish

**Government Agency:** Ministry of Education - Principal Advisor Secondary Transitions

**Contact details:** [margaret.paiti@education.govt.nz](mailto:margaret.paiti@education.govt.nz)

**Hopes for Māori Workforce:** “Māori are not just the future workforce; they’re the now – empowered through skills, culture and innovation –it’s not just an opportunity, it’s an obligation”

### Kristian Te Nana



**Government Agency:** Ministry of Social Development - Regional Labour Market Manager

**Contact details:** [Kristian.tenana001@msd.govt.nz](mailto:Kristian.tenana001@msd.govt.nz)

**Hopes for Māori Workforce:** “Providing a pathway for Māori in the workforce to grow, develop and get to the point where they can share their knowledge to Māori (and/or the rest of New Zealand).”

### Te Hira Pere



**Iwi:** Te Aitanga a Mahaki, Rongowhakaata, Ngati Ruapani, Ngati Kahungunu and Whanau a Kai

**Government Agency:** Tertiary Education Commission - Group Manager Business & Partnerships

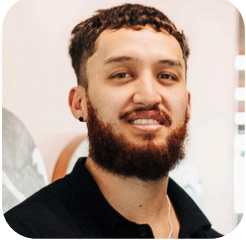
**Contact details:** [tehira.pere@tec.govt.nz](mailto:tehira.pere@tec.govt.nz)

**Hopes for Māori Workforce:** In envisioning the future of Māori workforce development, my hopes are anchored in empowerment, equity, and cultural integrity. I dream of a thriving Māori workforce, where Māori lead across a diverse range of sectors, and the richness of who we are as a people and that our cultural nuances and intricacies as a people are woven into every aspect of professional life. I hope for an educational system that nurtures Māori from an early age, blending modern skills with our rich heritage, that support transitioning seamlessly into career pathways that honour cultural identity. Moreover, I hope for a societal shift where Māori success is celebrated as a success for all New Zealand, fostering mutual respect and shared growth. By honoring our past, empowering our present, and inspiring our future, we can create a landscape where Māori aspirations and contributions are integral to the future of our overall workforce development as nation.



## Future Workforce Panel

### Te Manaaki Paki - Nepia



**Iwi:** Waikato

**Organisation:** Waikato Tainui - Career Pathways Advisor

**Contact details:** Temanaaki.Paki-Nepia@tainui.co.nz

**Hopes for Māori Workforce:** “My hope for anyone wanting to enter the industry is that they never lose sight of who they are...innately manufacturers, engineers and logistics experts. Our tupuna sailed across the Pacific, bringing with them, everything they needed to build a new home here in Aotearoa. We're all voyagers, capable of not only riding the waves that life throws at us, but thriving. Being Maaori is our superpower! ”

### Kaia Maake-Marsh



**Iwi:** Ngāti Maniapoto, Nga Puhi

**Organisation:** Repair Hub - Collision Repair Apprentice

**Contact details:** 029 020 08220

**Hopes for Māori Workforce:** “to feel included and welcomed into the industry. If Māori were to have a more tailored programme within the automotive industry, it would encourage more to join.”

### Victoria Gibbons



**Iwi:** NZ European, Canadian

**Organisation:** PaknSave - Bakery Apprentice

**Contact details:** 0276215125 | vicgibbons6@gmail.com

**Hopes for Māori Workforce:** “My hope is to create equal opportunities for everybody in the workforce and those doing an apprenticeship. I hope apprenticeship programmes can be set out to allow a good work-life balance whilst still giving opportunities to learn and grow our careers.”

### Dr Te Urikore Biddle



**Iwi:** Tuhoe, Ngāti Kahungunu, Ngāti Awa

**Organisation:** WINTEC | Managing Director

**Contact details:** mptt@wintec.ac.nz

**Hopes for Māori Workforce:** “Increase access and participation for Māori in the industry. Growth of Māori in leadership positions across all levels in the industry.”

### Rangi Huriwai



**Organisation:** Ohomauri - Rangatahi Pastoral Care and Transitions Lead